



Built-in camera

Fields of application

application behind front plates provided by customer | door side panel

Camera parameters

survey angle		90°
type of camera		colour
image sensor	cm (")	0.8 (1/3) SONY CCD
resolution	TVL	600
light sensitivity	Lux	0.1 at F 2.0
focal length f	mm	3.6

Mechanical characteristics

swivel and tilt range (only with VKR assembly frame)		7° swivel 7° tilt (mechanically adjustable)
type of installation		behind front plates provided by customer vertical / horizontal (camera) surface-mount (with assembly frame)
material of the housing		plastics
material of the assembly frame		aluminium stainless steel
colour of the camera built-in module		black
colour of the Montagerahmen		anodised natural white powder-coated
weight	g	100 (camera built-in module) 160 (assembly frame)

Electrical characteristics

input current I(a)	mA	0.0
input current I(P), in standby position	mA	120
input current I(Pmax), maximum	mA	120

System characteristics

signal transmission and power supply		polarity-free and short-circuit-proof 2-wire TCS:BUS
circuitry (number of wires)		6

Dimensions in H x W (x D)

camera	mm	80 x 109 x 35
recommended mounting height (camera)	mm	1,600
assembly frame	mm	82 x 78 x 5
front plate section	mm	Ø 25 (camera) 76 x 72 (cover frame)
front plate thickness	mm	maximum 5

Climatic characteristics

acceptable ambient temperature	°C	-20 to +50
UV resistance		unlimited

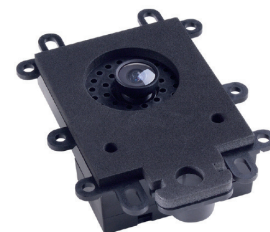
Scope of delivery

camera built-in module FVK2200 (horizontal) | FVK2201 (vertical)

Built-in camera for vertical and horizontal installation behind front plates provided by customer

FVK2201-0300

FVK2200-0300



Assembly frame for surface-mount for built-in camera

VKR10-WS



For questions regarding planning, please contact our technical support.

Send your enquiry by Fax to:

0 39 33 - 87 99 81

by Mail to:

bcm.support@tcsag.de

Subject to technical changes.
Images shown are not binding.