



Product information
Audio front door station series
ASX1300x-0010
for surface-mount



Table of contents

Scope of delivery.....	4
introduction.....	4
Notes on this product information.....	4
Used symbols and warning notices.....	4
Further used symbols and designations.....	4
Safety instructions.....	5
General safety regulations.....	5
requirements to protect against lightning.....	5
Product description.....	6
Intended use.....	6
Short description.....	6
Device overview.....	7
Technical data.....	7
Mounting and installation.....	8
Installation.....	8
Connecting the lines.....	11
Example circuit.....	12
Initial operation.....	13
Settings.....	13
Programming the bell buttons.....	14
Basic principle.....	14
Cleaning.....	15
Conformity.....	15
Information on disposal.....	16
Warranty.....	16
Spare parts, accessory.....	16
Service.....	16

Scope of delivery

- 1 x compact front door station ASX1300x-0010
- 1 x slot screwdriver
- 1 x hexagon ballpoint screwdriver with 2.5 mm wrench size
- 1 x special wrench for exchanging nameplates
- nameplates empty
- product information

Introduction

Notes on this product information



This product information refers exclusively to qualified electricians.

The product information contains important notes on intended use, installation and initial operation. Please, keep the product information at a suitable place, where it is easily accessible for maintenance and repair reasons.

All product information are available in the download area at www.tcsag.de .

Further information you'll find in our system manual, available in the download area at www.tcsag.de

Used symbols and warning notices

Symbol	signal word	Explanation
	DANGER!	The signal word describes an endangering with a high level of risk. Failure to observe this warning will result in death or very serious injury.
	WARNING!	The signal word describes an endangering with a medium level of risk. Failure to observe this warning could result in death or very serious injury.
	CAUTION!	The signal word describes an endangering with a low level of risk. Failure to observe this warning could result in a minor or moderate injury.
	ATTENTION!	The signal word indicates that damages on equipment, environment and property can occur.

Further used symbols and designations



important note or important information

Step



cross reference For further information on this topic, see source

• list, list entry 1 level

– list, list entry 2 level

a) Explanation

Safety instructions

General safety regulations



Assembly, installation, commissioning and repair of electronic devices must be carried out by qualified electricians.
Observe the latest regulations and standards for system installations.



WARNING! Danger to life due to electric shock

Observe the safety regulations according to DIN VDE 0100, when working on main power connections of 230 V.



When installing TCS:BUS systems the general safety regulations for telecommunication systems according to VDE 0800 must be observed. Inter alia:

- separated cable routing of high and low voltage lines,
- minimum distance of 10 cm in case of a common cable routing,
- use of separators between high and low voltage lines within shared cable ducts,
- use of standard telecommunication lines, e.g. J-Y (St) Y with 0.8 mm diameter,
- already existing lines (modernisation) with deviating cross-sections can be used in compliance with the loop resistance.

Requirements to protect against lightning



CAUTION! Device damage due to over-voltage

By suitable lightning protection measures it has to be ensured that the electric voltage of 32 V DC at each connection is not to be exceeded.

Product description

Intended use

The ASX1300x-0010 is audio front door station series with compact design, suitable for the usage in the outdoor and indoor area.

The series is suitable for surface-mount.

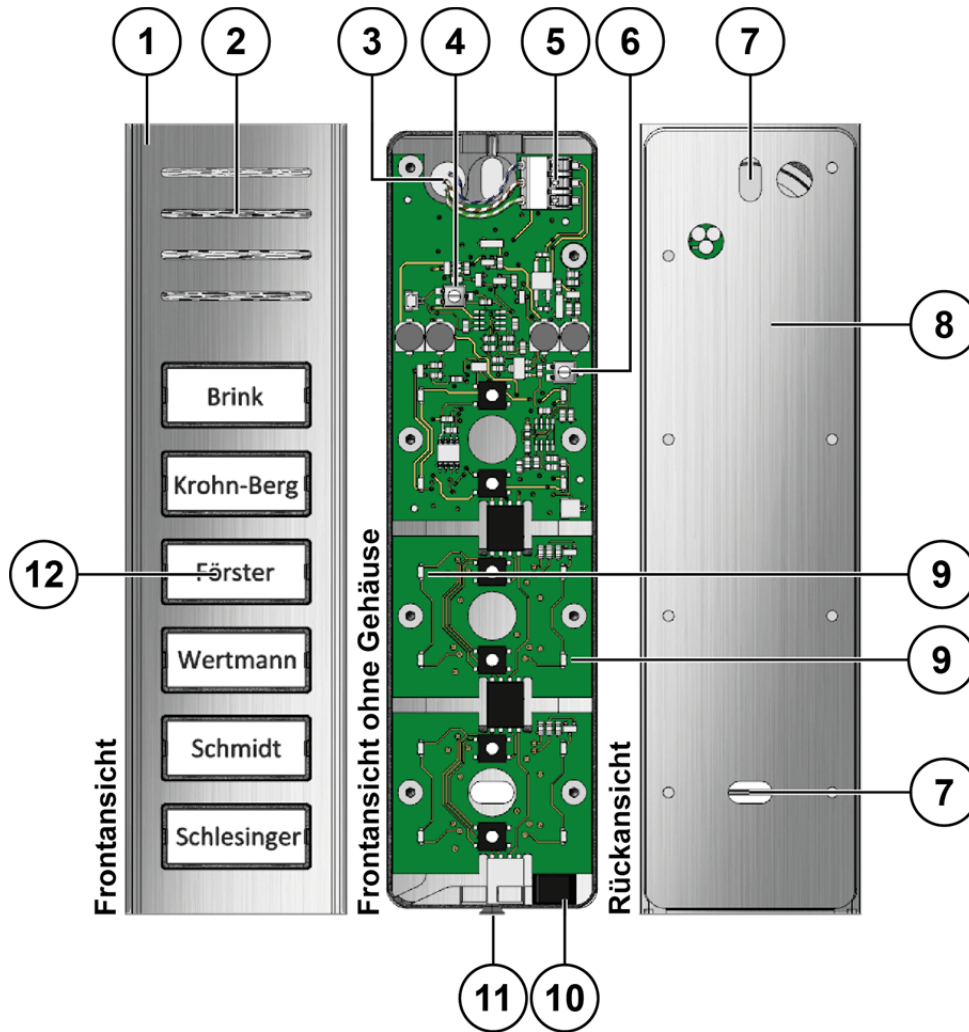


For applications, which differ from the intended use or goes beyond it, the manufacturer accepts no liability.

Short description

- for up to 6 flats
- nameplate size 31 mm x 12 mm (W x H)
- housing made of robust aluminium
- bell push-button made of plastics
- per bell push-button 2 indoor stations can be allocated
- durable and energy-saving nameplate illumination
- shatter-proof nameplate glass
- acknowledgement tone when pressing the bell button
- conversation time ex works: 56 seconds / can be adjusted with configuration software configo™
- any bell push-button can be used to switch the light, light symbol enclosed
- volume and microphone sensitivity can be adjusted manually
- door call standby time (to control the short-term memory in indoor stations) ex works: 56 seconds / can be adjusted with configuration software configo™
- voice connection in door call standby time / can be adjusted with configuration software configo™

Device overview



- | | | | |
|---|----------------------------------|----|-----------------------------------|
| 1 | upper part of the housing | 7 | attachment hole |
| 2 | loudspeaker | 8 | rear panel |
| 3 | cable gland | 9 | LED nameplate illumination |
| 4 | volume control loudspeaker | 10 | microphone |
| 5 | connection terminal (a, b and P) | 11 | fitting upper part of the housing |
| 6 | volume control microphone | 12 | bell button with labelling |

Technical data

supply voltage	+24 V ± 8 % (power supply and control unit)	
input current in resting position	3-wire operation:	I(a) = 0.4 mA, I(P) = 9.13 mA
maximum input current:		I(a _{max}) = 17 mA , I(P _{max}) = 25 mA
housing	aluminium, anodised nature	
nameplate glass	acrylic glass	
dimensions (H x W x D)	from 99 to 179 x 50 x 16 mm	
weight (in g)	107 g (ASX13002-0010)	
acceptable ambient temperature	-25 °C ... + 55 °C	
degree of protection	IP44	
3-wire technology necessary!		

Mounting and installation

Installation



CAUTION! Damages on the device

Do not seal the device with silicon under any circumstances! Condensed water must be able to escape and evaporate.

Installation site

For an optimal operation we recommend a mounting height of 1.50 m (Fig. 1).



Observe to keep a free space of at least 10 cm below the device when installing it, to ensure a proper function of the microphone.

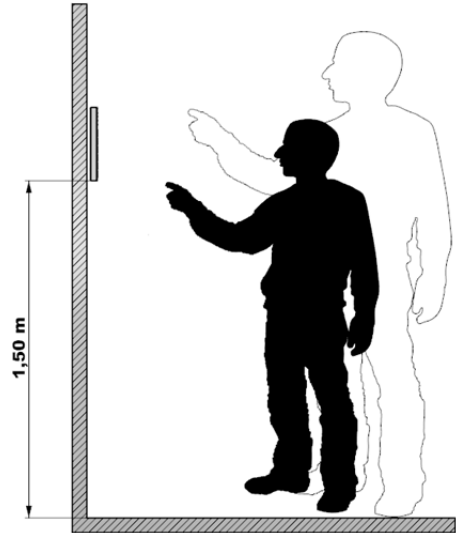


Fig. 1: Mounting height

Opening the device

The upper part of the housing is screwed together with the rear panel via a hexagon socket screw (Fig. 2).

- ▶ Loosen the hexagon screw (1) with the allen key (2) for around 2 mm.



Do **not** unscrew the hexagon screw.

- ▶ Pull off the upper part of the housing from the rear panel (3).
- ▶ Remove the upper part of the housing upwards (4).
- ▶ Pull off the cable of the loudspeaker from the socket.
- ▶ Place the upper part of the housing on a clean and dry surface.

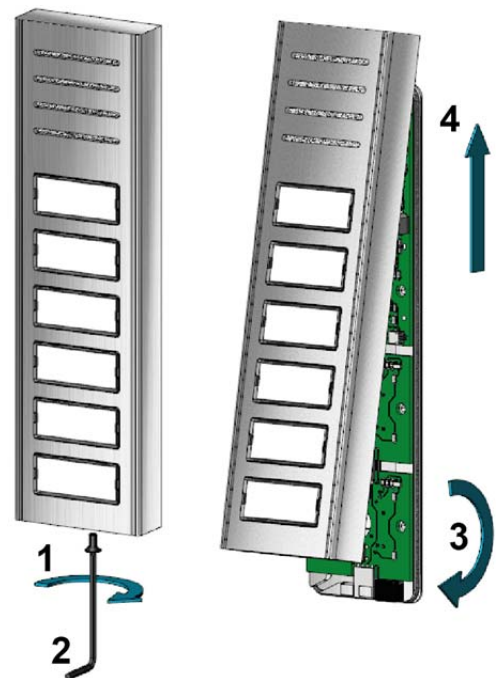


Fig. 2: Opening the front door station

Assembling the rear panel

- ▶ Guide the connection cable (3) through the cable gland (1) of the rear panel (Fig. 3).
- ▶ Fix the rear panel with 2 screws (2) to the wall.

i Observe the installation position of the rear panel. The connection terminal must face upwards.

i Ensure that the cables from the rear panel do not get clamped.

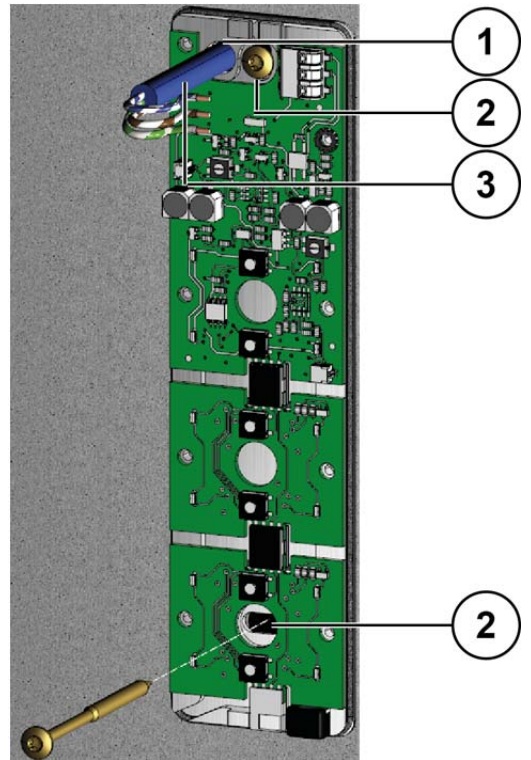


Fig. 3: Assembling the rear panel

Connecting the lines

- ▶ Strip the lines.
- ▶ Connect the lines (a, b and P) according to the labelling (1) (Fig. 4).

i Observe the example circuit on page 12.

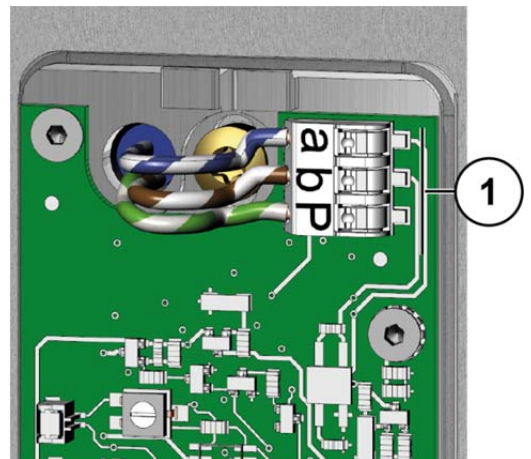


Fig. 4: Connecting the lines

2-wire technology (special operation)

Using this operation mode only 1 front door station can be connected.

Bridge the terminals a and P for power supply.

i The front door station does not work if the bridge is connected to the b-wire.

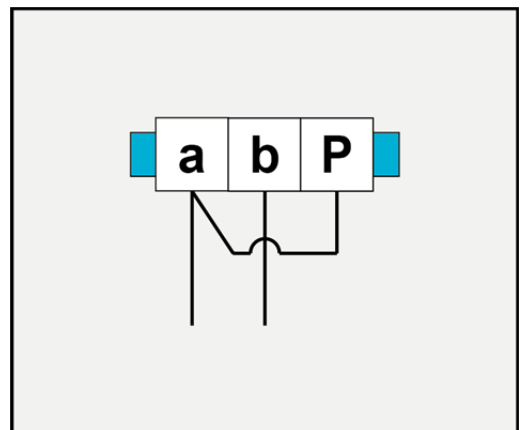


Fig. 5: 2-wire technology (special operation)

Closing the device

- ▶ Plug the connector of the loudspeaker cable (1) into the appropriate socket (Fig. 6).

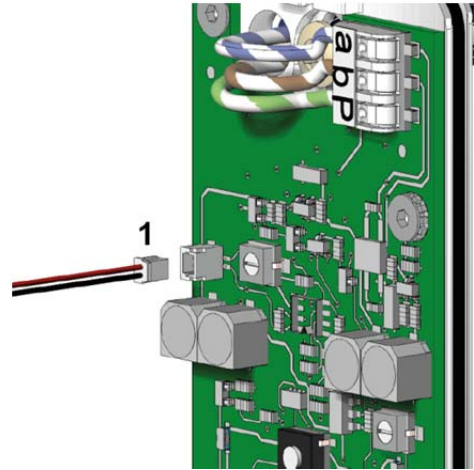


Fig. 6: Connecting the loudspeaker

- ▶ Put on the upper part of the housing (2) onto the rear panel (Fig. 7).
- ▶ Turn down the upper part of the housing onto the rear panel (3).
- ▶ Fix the upper part of the housing to the rear panel with the hexagon socket screw.

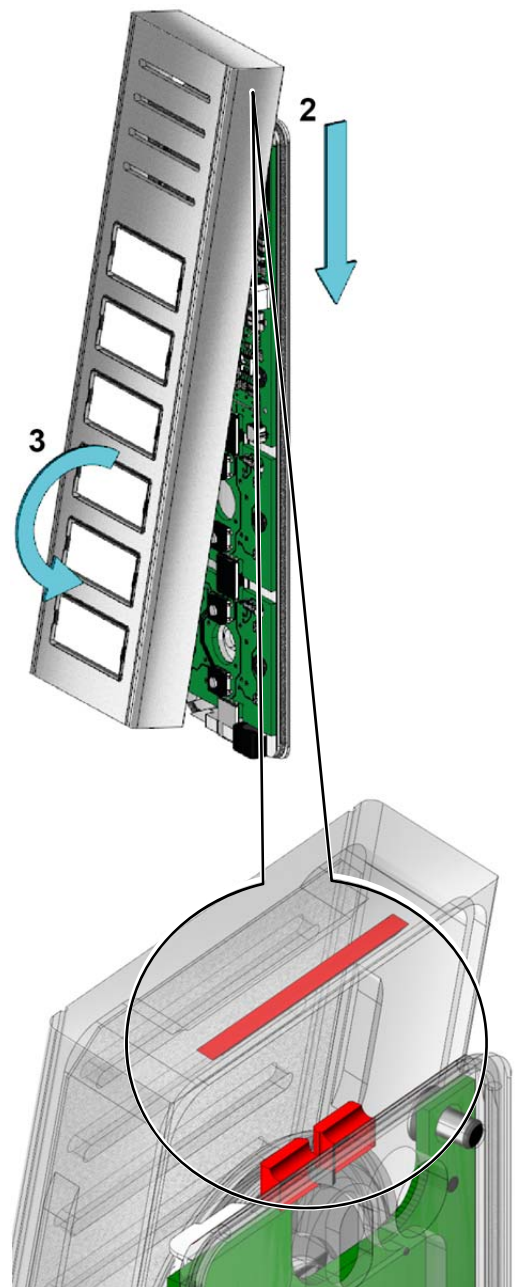


Fig. 7: Closing the device

Labelling the bell button



Labelling templates as WORD files are available for download at www.tcsag.de .

- ▶ Enter the required names into the labelling template.
- ▶ Print the nameplates on the special foil by using a laser printer.
- ▶ Alternatively label the special foil with a waterproof marker.
- ▶ Cut out the nameplate along the marking (W x H 31 x 12 mm).
- ▶ Remove the cap of the bell button with the special wrench (1).
- ▶ Place the nameplate back-to-front in the cap. (Fig. 9).
- ▶ Snap-in the cap on the bell button with light pressure.



- Condensation water can form inside the bell button.
- Do not use nameplates made of paper.
- We recommend to print out the nameplates on a durable special foil made of plastics.
- You can order replacement foils directly under E-Mail: info@tcsag.de or use our labelling service: www.tcsag.de.



Fig. 8: Open the bell button



Fig. 9: Placing the nameplate

Connecting the lines

Connecting lines



Permissible cross-section:
– single-wire and fine-wire 0,2 ... 0,75 mm²

Connect further wires by using auxiliary terminals.

Use only connecting lines made of the same material and with the same diameter within one terminal contact.

General information



- Use the small slot screwdriver (enclosed in the delivery) to connect lines. Avoid damaging the device.
- Ensure that no lines are clamped on the backside of the front door station or between the upper part of the housing and the rear panel.

Example circuit

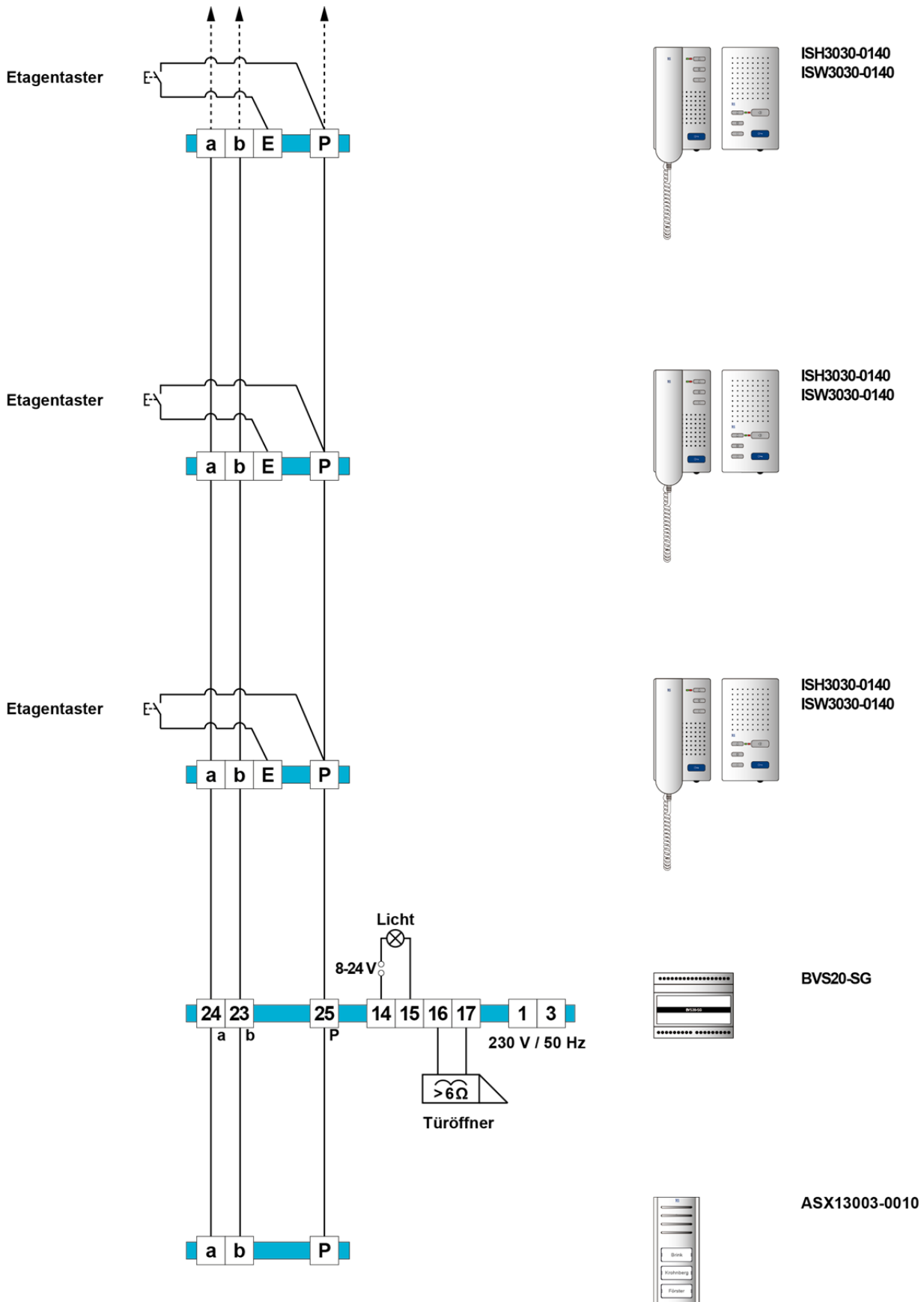


Fig. 10: Circuit diagram

For further information see TCS system manual. The TCS system manual can be downloaded at www.tcsag.de.

Initial operation

- ▶ Install the devices of the system completely.
- ▶ Proof the a-, b- and P-wire against each other on short-circuit.
- ▶ Switch on the mains voltage.

Settings



- For setting the volume use the enclosed slot screwdriver.
- The volumes are set on an average value ex works. A change is not always required.

Adjust the loudspeaker volume

- ▶ Turn the control **(1)** right to increase the volume of the loudspeaker (Fig. 11).
- ▶ Turn the control **(1)** left to reduce the volume of the loudspeaker.

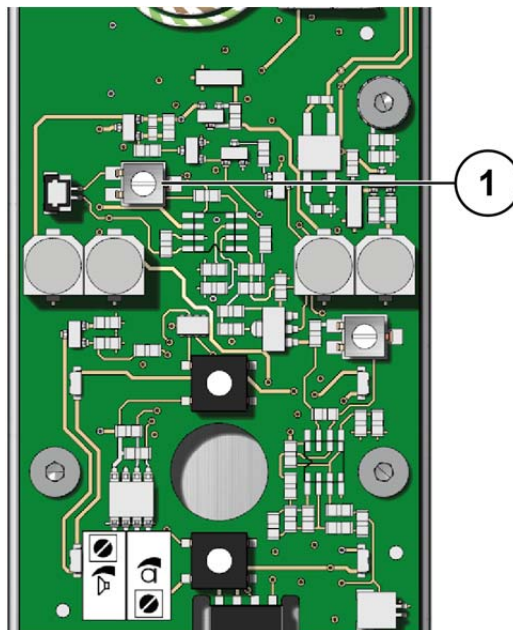


Fig. 11: Adjust the loudspeaker volume

Adjust the microphone volume

- ▶ Turn the control **(2)** right to increase the volume at the indoor station (Fig. 12).
- ▶ Turn the control **(2)** right to reduce the volume at the indoor station.

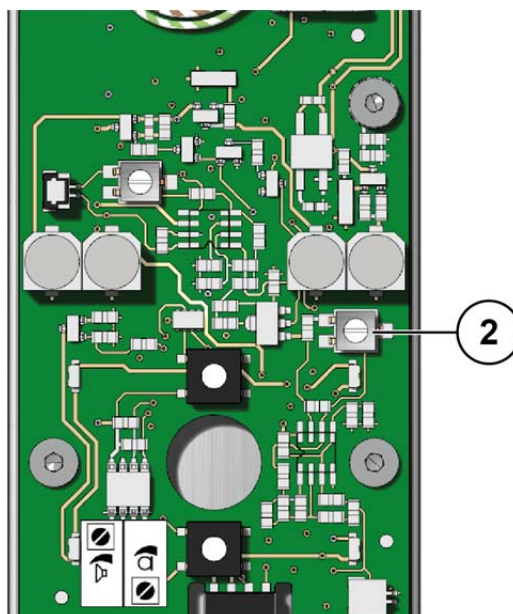


Fig. 12: Adjust the microphone volume

Programming the bell buttons

Basic principle

All devices at the TCS:BUS have an unique serial number.

The serial number of the indoor station is allocated to the bell button of the front door station. The allocation is stored in the EEPROM of the front door station.

Requirements for the programming:

- ▶ Ensure that the access to the indoor station in the flat is granted.
- ▶ Check if the indoor station is connected to the TCS:BUS.
- ▶ Switch on the mains voltage. The operating LED at the power supply and control unit is on.
- ▶ Check if a programming lock is set.

 Manual TCSK.



If the programming lock is activated, you cannot program any bell button. To deactivate the programming lock you need a Service Device TCSK or the configuration software configo™.

1 Power supply and control unit: switch on the programming mode of the system



Shortly press ^{a)} the RUN/PROG button.

The LED blinks.

The programming mode of the system is switched ON.

2 Deleting bell buttons



Press the button which should be deleted for 6 seconds until an acknowledgement tone sounds. ^{c)}

Release the bell button. Repeat step 2 to delete further bell buttons.

3 Programming via voice communication



Establish a voice communication to the front door station. ^{d)}

Press the bell button which should be programmed.

A ring tone sounds at the front door and indoor station. ^{c)}

Terminate the voice communication.

4 Power supply and control unit: switch off the programming mode of the system



Shortly press the RUN/PROG button.

The LED is on.

The programming mode of the system is switched OFF. ^{e)}

- a) Do not press the RUN/PROG button longer than 5 seconds. Otherwise you will activate the light switch function of the front door station. The bell button cannot be programmed. The LED blinks. Shortly press the RUN/PROG button to switch off the programming mode. Shortly press the RUN/PROG button to switch on the programming mode. Program the bell button.
If the light switch function is activated, you can switch the lights by pressing the door release button of the indoor station, if no voice communication is established. Switch on the programming mode. Press the RUN/PROG button longer than 5 seconds until the LED lights up. The light switch function is deactivated.
- b) Not necessary, if the bell buttons have not been programmed, see product information of the front door station.
- c) If there sounds a Progsper tone (long high tone followed by long low tone) instead, the front door station is equipped with a programming lock. You can deactivate the programming lock only with the service device TCSK or the configuration software configo™.
- d) An acknowledgement tone sounds at front door stations (as of 2009) if the serial number of the indoor station was received (see product information of the front door station).
- e) device specific indication modes of the front door station see product information of the front-door station

Cleaning



CAUTION! Loss of function due to short-circuit and corrosion.

Water and cleaning agents can enter the device. Electronic elements can get damaged due to short-circuit or corrosion.

Avoid water and detergents from entering the device! Clean the device with a dry or slightly wet cloth.



CAUTION! Damages on the surface of the device

Abrasive or scratching detergents damage the surface of the device.

Do not use any abrasive detergents! Remove stronger stains with a pH neutral household cleaner.

Conformity



Declarations of conformity are available for download under www.tcsag.de.

Information on disposal



Dispose the device separately from domestic waste via a collection point for electronic scrap. Ask your county administration for the responsible collection point.



Dispose the parts of the packaging in collecting tanks for cardboard and paper resp. plastics.

Warranty

We offer a **simplified processing** in case of warranty for qualified electricians.

- Please contact the **TCS HOTLINE** under **hotline@tcsag.de**.
- Our **standard terms and conditions of sale** you'll find under www.tcsag.de.

Spare parts, accessory

Short text	Article number
laser film foil matt, format DIN A4 (nameplates)	0001060
special wrench	0012493
weather protection roof	ZAS13xx-0010

Service

Please send your questions and inquiries to
TCS HOTLINE **hotline@tcsag.de**

Headquarters

TCS TürControlSysteme AG, Geschwister-Scholl-Str. 7, 39307 Genthin | Germany
FON: Fax +49(0)3933 8799/-10 +49(0)3933 8799-11 www.tcsag.de

TCS Hotline Germany
FON: +49(0)4194 9881-188 FAX: +49 4194 988-129,
E-Mail: hotline@tcsag.de

Subject to technical changes.

time of printing: 07/2016
PI_ASX1300x-0010_uk 1 A