

SERIES ASI

BUILT-IN DOOR LOUDSPEAKER

INSTALLATION

TCS:
BUS

- For up to 208 bell buttons
- High volume for loud environments
- Microphone can be separated
- Resistant against feedbacks
- Status indication for commissioning and maintenance
- Suitable for the series KTU

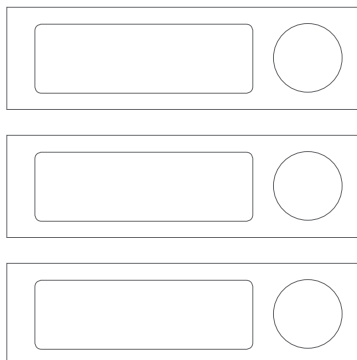
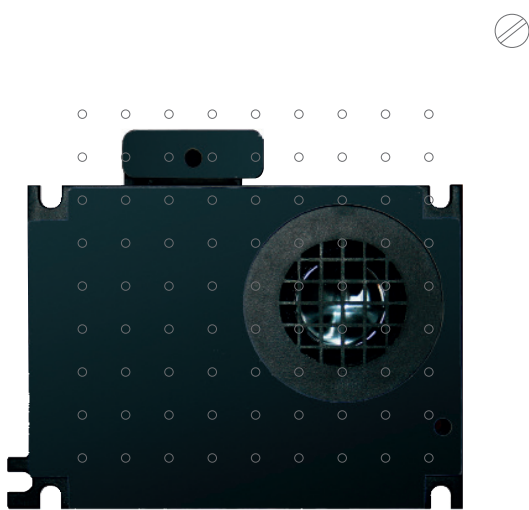
PRODUCT OVERVIEW



Built-in door loudspeaker for up to 16 buttons



Bell button extension for the built-in door loudspeaker for up to 208 buttons



Item no.

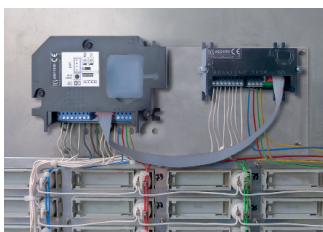
Built-in door loudspeaker for up to 16 bell buttons

[ASI11000-0000](#)

Bell button extension for up to 32 bell buttons

[ASI21000-0000](#)

INSTALLATION



Installation behind fronts and in letterboxes

The built-in door loudspeaker can be used in many ways. Please use the installation instruction with specific installation recommendations behind fronts and in letterboxes from ...

- > Renz
- > JU
- > Lippert
- > Max Knobloch

Installation instructions are available for download at www.tcsag.de



SERIES ASI

BUILT-IN DOOR LOUDSPEAKER ASI11000

- > Number of bell buttons: up to 16
- > Voice transmission: hands-free talking (standard), duplex communication (can be activated)
- > Type of mounting: installation behind front panels provided by customer
- > Type of housing: installation housing
- > Voice transmission: via integrated loudspeaker
- > Material of the housing: plastics
- > Colour of the housing: black
- > Volume voice output: adjustable
- > Volume acknowledgement tone: adjustable
- > Connection to TCS:BUS, bell buttons: at pluggable screw terminals

EXTENDED FEATURES

- > Light switch function: at unprogrammed bell button
- > Display module function: at socket
- > Mixed installation audio, video, access control: possible
- > Commissioning and configuration: manually, with Service Device, with configuration software
- > Memory of system configuration: pluggable
- > Slot: to read-in TCU2 memories
- > Error indication: optical/acoustical
- > Status indication: error, operation modes

TECHNICAL DATA

- > Technology: TCS:BUS
- > Number of wires: 3-wires necessary
- > Input current in resting position: 7.7 mA
- > Maximum input current: 40 mA
- > Installation housing HxWxD mm: 79x112x34
- > Length microphone cable: 250 mm
- > Acceptable ambient temperature: -20 to +50 °C

SCOPE OF DELIVERY

- > Microphone cable for decoupling

ACCESSORY

- > Built-in bell button extension: ASI21000-0000

BUILT-IN BELL BUTTON EXTENSION ASI21000

- > Number of bell buttons: up to 32
- > Number of bell button extensions: up to 6

TECHNICAL DATA

- > Input current in resting position: 3 mA
- > Maximum input current: 3 mA
- > Installation housing HxWxD mm: 56x88x30
- > Acceptable ambient temperature: -20 to +50 °C

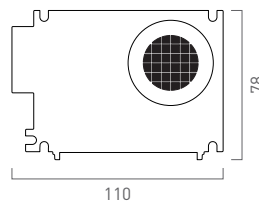
SCOPE OF DELIVERY

- > Connection cable for ASI11000/ASI21000

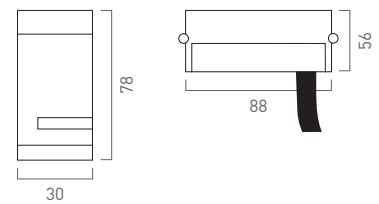
<https://www.tcsag.de/en/products/>

DIMENSIONS (IN MM)

Built-in door loudspeaker
ASI11000-0000



Bell button extension
ASI21000-0000



CONTACT US

In case of any questions on planning, please contact our technical hotline

Phone +49 4194 9881-188
(German landline)

Send your inquiry to

Fax +49 4194 9881-189
Email hotline@tcsag.de