

# TCU SERIES

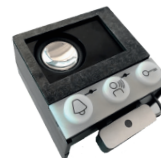
BUILT-IN DOOR LOUDSPEAKER

INSTALLATION

TCS:  
BUS

- For up to 208 bell buttons
- High volume for loud environments
- Microphone can be separated
- Resistant to feedback
- Status indication during commissioning and maintenance
- For mounting behind loud speaker covers or letterboxes
- Suitable for customisation configurator
- LED pictogram display for barrier-free buildings

## PRODUCT OVERVIEW



Built-in door loudspeaker for up to 16 push-buttons

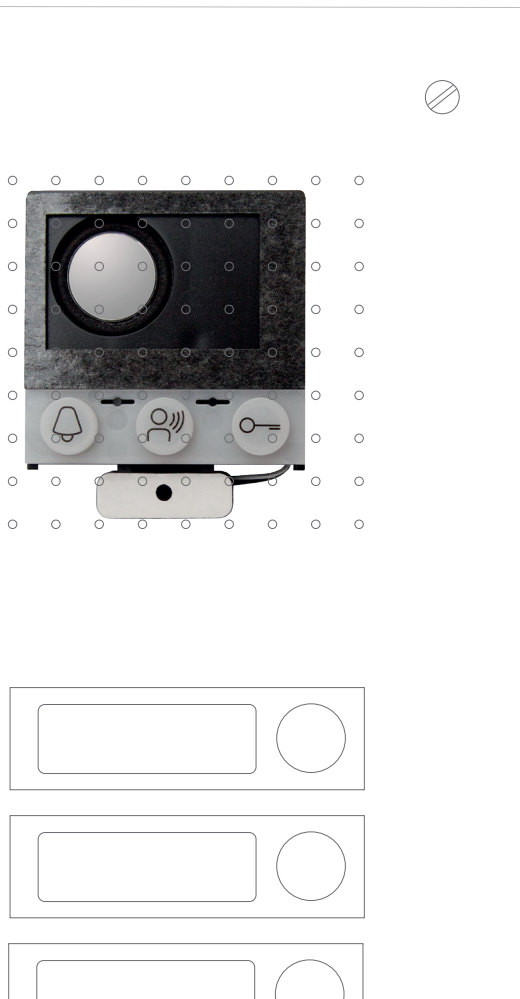


Bell button extension for built-in door loudspeaker for up to 208 push-buttons

## CUSTOMISATION



3D configurator for front-door stations  
Bell button tableaux with pre-wired TCU can be configured to the exact dimensions using the customisation configurator.  
> [www.tcsag.de/konfigurator](http://www.tcsag.de/konfigurator)



## TCU SERIES AND VIDEO:KITS



With the built-in door loudspeaker from the TCU series and the video cameras of the TCS range, you can create a complete video communication system. Depending on the camera mounting option, four video:kits are available to choose from.



Use the QR code to open the PDF datasheet

Article no.

Built-in door loudspeaker for up to 16 bell buttons

[ASI12000-0000](#)

Bell button extension for up to 32 bell buttons

[ASI21000-0000](#)

# TCU SERIES

## TCS BUILT-IN DOOR LOUDSPEAKER ASI12000

### DEVICE FEATURES

- > Number of bell buttons: up to 16
- > Voice transmission: hands-free talking
- > Full-duplex hands-free talking for indoor stations with handset possible
- > Type of mounting: installed behind customer's loud speaker covers
- > Type of housing: built-in housing
- > Integrated loudspeaker
- > Microphone can be separated, 250 mm
- > Housing material: plastic
- > Colour of housing: black
- > Voice output volume: can be adjusted manually
- > Acknowledgement tone volume: can be adjusted manually
- > Connection TCS:BUS, bell buttons: on plug-in screw terminal

### EXTENDED FEATURES

- > Light switch function: on unprogrammed bell button
- > Technology: TCS:BUS
- > Installation mix of audio, video and access in one system: possible
- > Commissioning and configuration: manual, with service device, with configuration software configo
- > System configuration memory: can be changed
- > LED pictogram display for barrier-free buildings
- > Error indication: optical and acoustic
- > Status indication: error, operating mode

### TECHNICAL DATA

- > Number of wires: 3-wire required
- > Current consumption I(P), in stand-by: 3.0 mA
- > Max. current consumption I(Pmax): 24.3 mA
- > Built-in housing H x W x D mm: 67 x 68 x 38
- > Length of microphone cable: 250 mm
- > Acceptable ambient temperature: -25 to +55°C
- > Weight: 116 g
- > Protection category: IP24

### SCOPE OF DELIVERY

- > Product information

### ACCESSORIES

- > Built-in bell button extension: ASI21000-0000

## TCS BUILT-IN BELL BUTTON EXTENSION ASI21000

### DEVICE FEATURES

- > Number of bell buttons: up to 32
- > Number of bell button extensions: up to 6

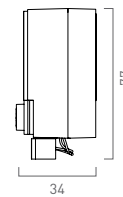
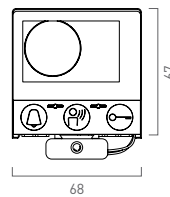
### SCOPE OF DELIVERY

- > Connecting cable for ASI12000/ASI21000

 <http://www.tcsag.de/produkte>

### DIMENSIONS (IN MM)

Built-in door loudspeaker  
ASI12000-0000



Bell button extension  
ASI21000-0000



### INSTALLATION

#### Installation behind front-door panels and in letterboxes

The built-in door loudspeaker has multiple applications. The built-in door loudspeaker can be installed behind front panels that are up to 4 mm thick, and behind letterboxes.

To install an optional LED pictogram display, three drill holes are required under the communication grille.

Assembly instructions are available in the download area at [www.tcsag.de](http://www.tcsag.de)



## CONTACTS

For design queries, please contact the technical hotline

Tel. +49 (0)4194 9881-188  
(German landline)

Please direct your queries to

Fax +49 (0)4194 9881-189  
E-mail [hotline@tcsag.de](mailto:hotline@tcsag.de)